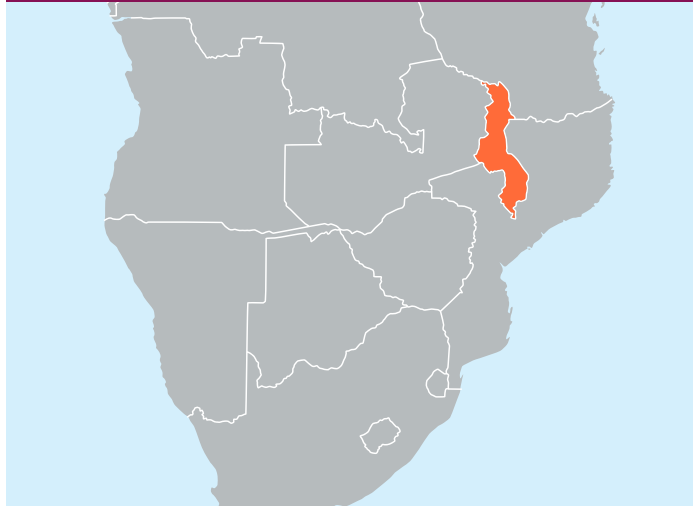


Malawi Fact Sheet

SEVA'S WORK AT A GLANCE: In country since 2018 | Partner: 1

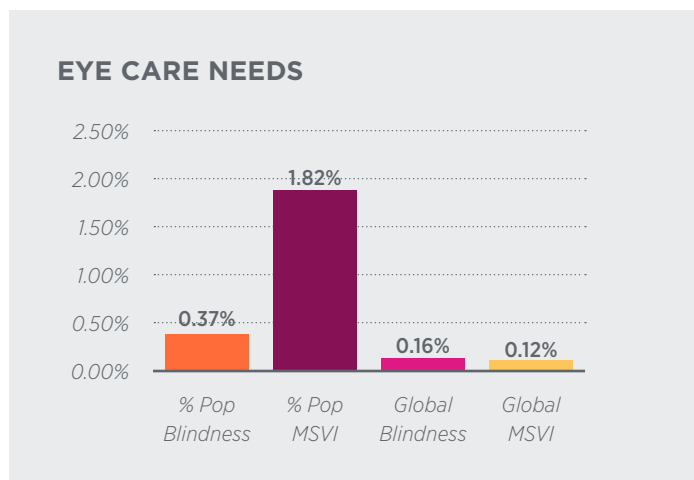


Country Overview

- » Located in Eastern Sub-Saharan Africa
- » Malawi spans 45,747 mi²
- » Population: 19.1 million people
- » 2020 Human Development Index Ranking: 174 of 189 countries¹

Scope of Eye Care Needs

- » 0.37% of Malawi's population is blind (69,000), as compared to 0.19% in the United States
- » 1.82% of the population has moderate to severe vision impairment or MSVI (339,817), as compared to 2.02% in the United States²
- » 0.16% of global blindness
- » 0.12% of global MSVI



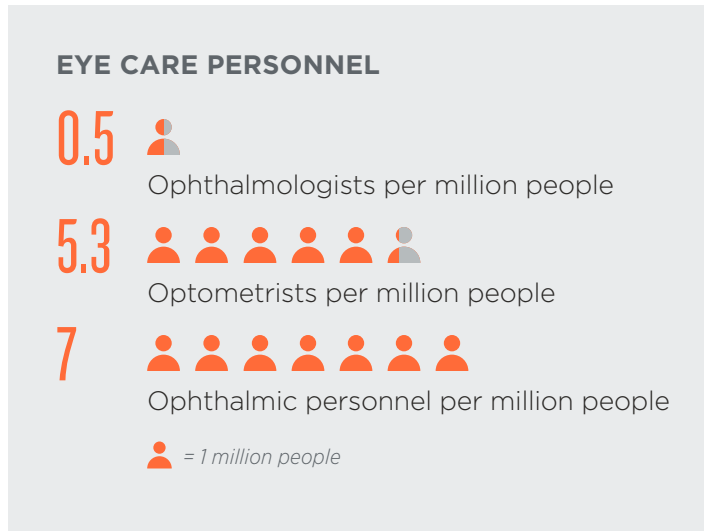
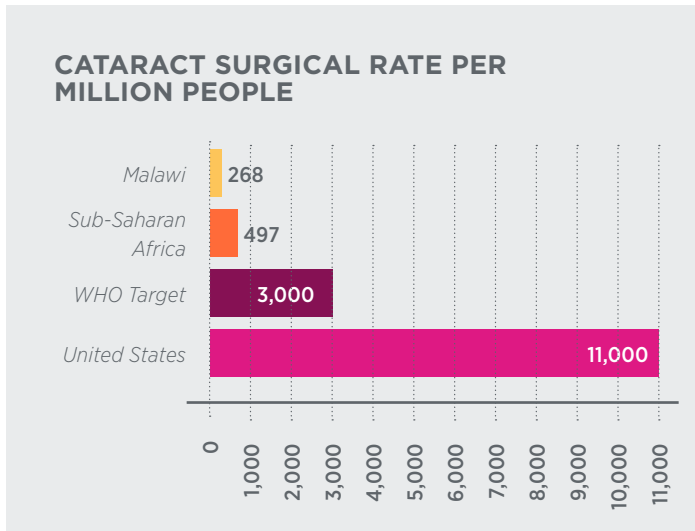
Nationwide Eye Care Response

Sub-Saharan Africa's median Cataract Surgical Rate (CSR) is 497 — 28% of the global average and 6% of the average for high-income countries. Seva works to improve these rates through our hospital management systems and training support in Malawi, focusing on improvement in the following Global Action Plan indicators for universal eye health.

- » Malawi's CSR was 268 surgeries per million in 2019, as compared to the US CSR of 11,000
- » 0.5 ophthalmologists per million people in Malawi as of 2019 (US = 54.7 per million people)
- » 5.3 optometrists per million people as of 2019 (102 total)
- » 7 AOPs per million people in 2019 (136 in total)

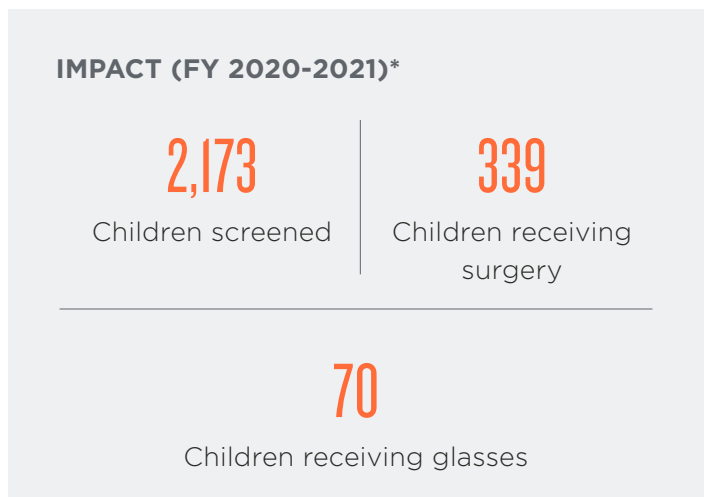
¹ 2020 UNDP Human Development Report: <http://hdr.undp.org/en/countries>

² Unless otherwise noted, all statistics provided by IAPB Vision Atlas Global Vision Database.



Seva’s Approach in Malawi

Seva partners with the Kilimanjaro Centre for Community Ophthalmology (KCCO) to reduce blindness in Malawi. Established in 2001 in response to the VISION 2020 initiative, KCCO works to increase access to high-quality eye care services provided by Africans for Africans. With Seva’s support in hospital management systems and training, KCCO partners with local governmental hospitals to train community health workers, conduct outreach trips to rural communities without regular access to eye care, provide clinical training for ophthalmologists and cataract surgeons, and providing funds for medical treatments for those who cannot afford them. In Malawi, Seva and KCCO partner with the Queen Elizabeth Central Hospital, Blantyre to expand its pediatric eye care program. This support includes necessary consumables, eye health promotion, training of key informants across communities who can identify eye health problems in children, as well as surgical support. It also contributes toward a coordinator tasked to manage the pediatric outreach efforts.



Impact of COVID-19 in Malawi

COVID-19 continues to impact the country with spikes in cases in early 2021 and again in August. Restrictions remain in place for businesses and travel is also limited. Seva’s partner hospital has been able to resume most operations and is beginning to provide some community-based screening activities using enhanced safety protocols.

Resources

- [Seva’s work in Africa](#)
- [KCCO Website](#)

* Numbers based on reports received.

MALAWI FACT SHEET

