

Pakistan Fact Sheet

SEVA'S WORK AT A GLANCE: In country since 2007 | Partner: 1

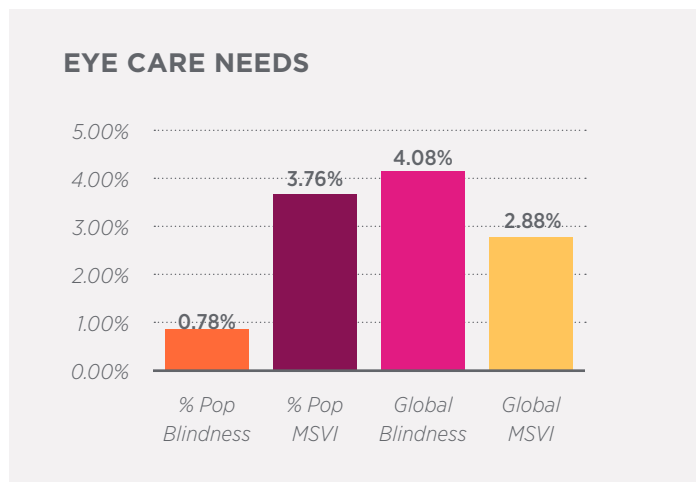


Country Overview

- » Pakistan spans 307,374 mi²
- » Population: 221 million
- » 2020 Human Development Index Ranking: 154 of 189

Scope of Eye Care Needs¹

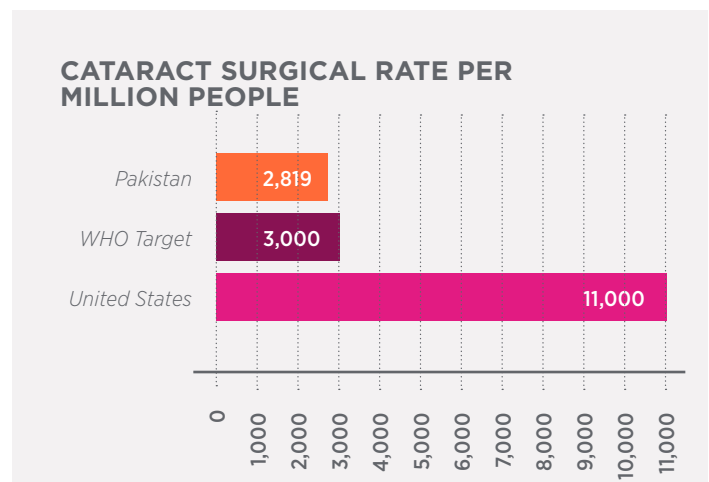
- » 0.78% of Pakistan's population is blind (1,755,867), as compared to 0.19% in the United States
- » 3.76% of the population has moderate to severe vision impairment (8,501,090), as compared to 2.02% in the United States
- » 4.08% of global blindness
- » 2.88% of global MSVI



Nationwide Eye Care Response

Pakistan's 2014 CSR was 2,819 surgeries per million, as compared to the US CSR of 11,000 and WHO target CSR of 300 per million. Pakistan's 2013 cataract surgical coverage (CSC) was 71.3% (<3/60) as compared to the WHO target of 80%.

- » In 2015, there were 14.8 ophthalmologists per million people in Pakistan.
- » There were 4.6 optometrists, and 9 AOPs per million people.



¹ Unless otherwise noted, all country sight statistics from IAPB Vision Atlas: <http://atlas.iapb.org/global-action-plan/gap-indicators/>

Seva's Approach in Pakistan

Approximately 4% of the world's blind live in Pakistan. With 1.7 million people blind, many have limited access to eye care. Most of Pakistan's trained ophthalmologists work in urban areas at government or private clinics, making accessible and affordable eye care a concern in rural communities. Women living in rural areas are especially vulnerable, as social constraints inhibit their ability to travel to receive necessary services.

Seva strengthens eye care programs in rural Pakistan with our partner, Comprehensive Health & Education Forum (CHEF) International. Seva's work with CHEF International is focused on providing quality and affordable eye care to the farming community of Buner. Together, Seva and CHEF established an eye care center in Buner in 2017 providing accessible, affordable and sustainable eye care services to the community.

Seva supports CHEF International with local staff development, operational improvements, and funding for direct services. With this support, Seva has helped CHEF become a resource to other Pakistani eye hospitals.

Impact of COVID-19 in Pakistan

COVID-19 cases continue to increase across the country. The pandemic has created gaps in health-care delivery and increasing cases in rural areas are adding to the uncertainty. Seva's partner in Pakistan, CHEF, has increased the capacity of its para medical and medical staff with a focus to improve local community awareness of COVID-19 in the three districts where it works. As part of its response, Seva provided funds to procure essential protective equipment for its partner hospitals. CHEF has also provided training on improving safety protocols to its networks of hospitals

Resources:

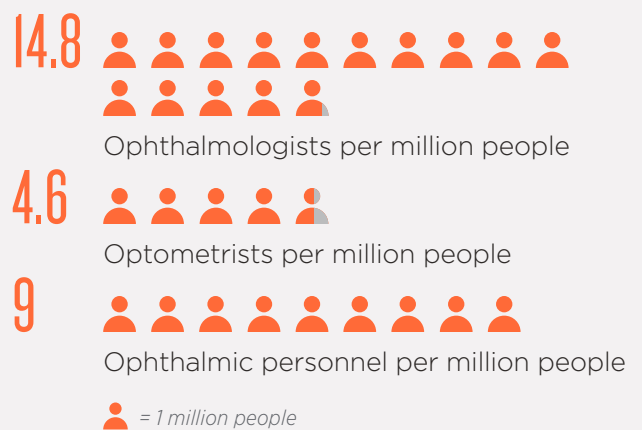
- [Seva's Clear Vision for Pakistan](#)
- [CHEF International](#)

SPOTLIGHT ON REACHING CHILDREN

For most of her life, Shakeela Bibi did not realize she had a vision problem. A 14-year old girl living in Pakistan, Shakeela had to drop out of school after two years because she could not keep up with her peers. She had trouble reading the blackboard and would copy off of other students' notes instead. She would sometimes bump into walls when she was in an unfamiliar setting. She thought she was just clumsy. But as she grew older, her vision got worse. Her mother had passed away, and her father, a popcorn salesman, had to care for her when he wasn't at work. Luckily, one day a woman in her community suggested that she visit Tehsil Eye Care Center, Buner, a Seva partner. Shakeela took her advice and learned that she had a cataract in one of her eyes. She received a free cataract surgery - and could see everything she had been missing.

"Everything is very bright!" she crows ecstatically. "I have found a new life...For me, sight is everything," she says. "It brought back my dignity and independence."

EYE CARE PERSONNEL



PAKISTAN FACT SHEET

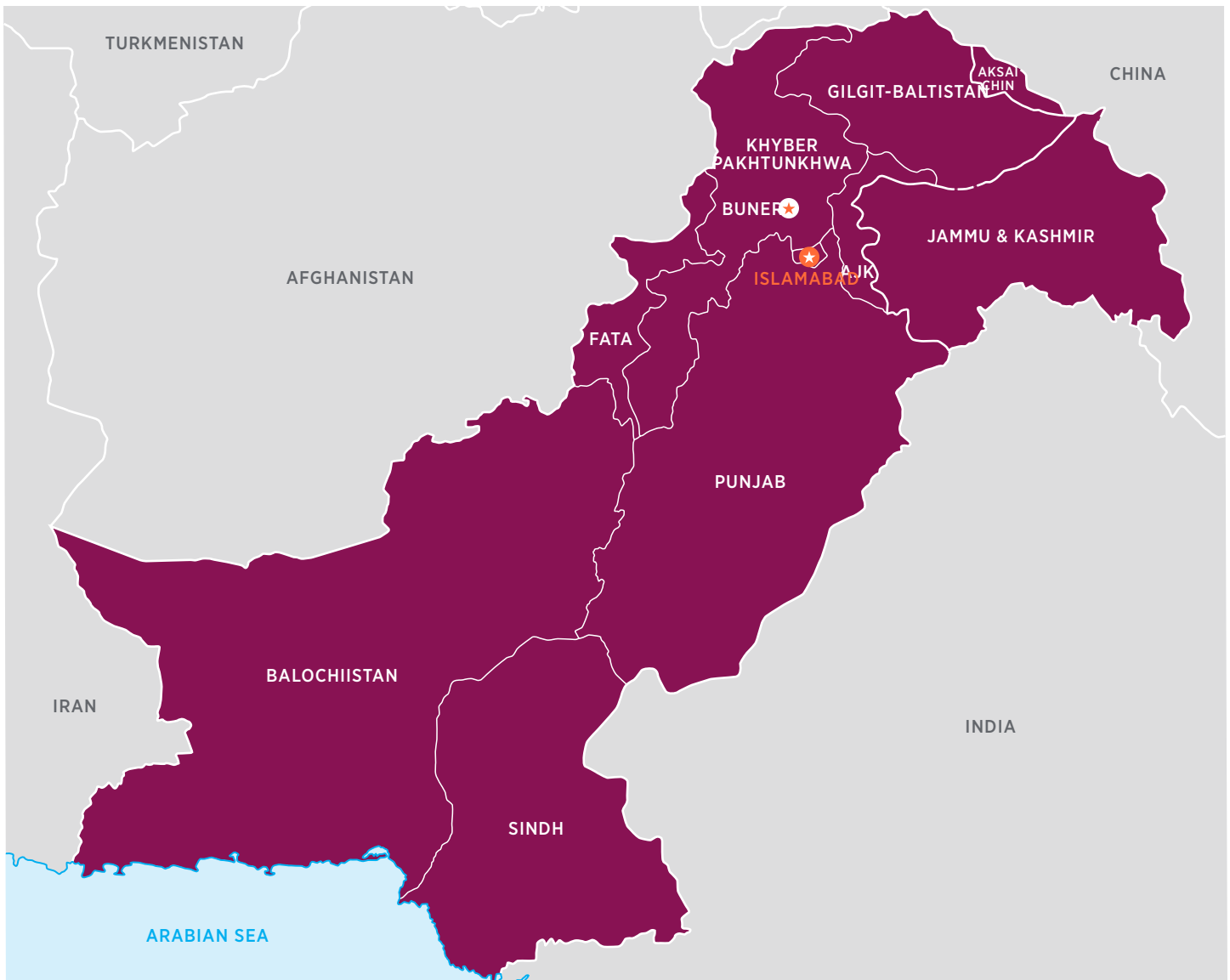
IMPACT (FY 2020-2021)*

48,796

People receiving services

3,100

Cataract surgeries performed



* Numbers based on reports received.