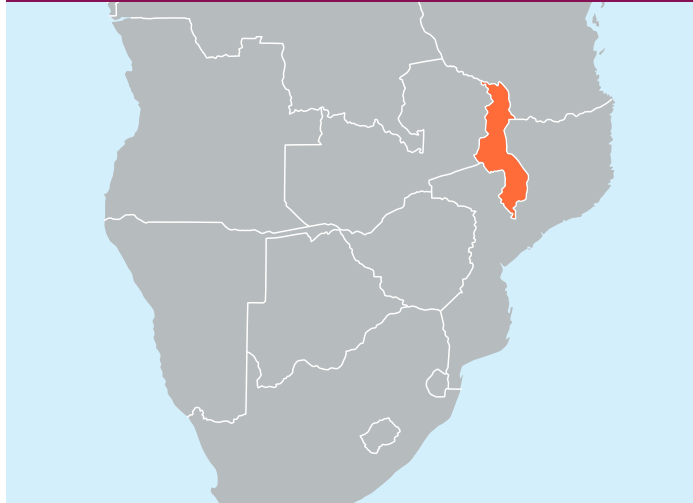


Malawi Fact Sheet

SEVA'S WORK AT A GLANCE: In country since 2018 | Partner: 1

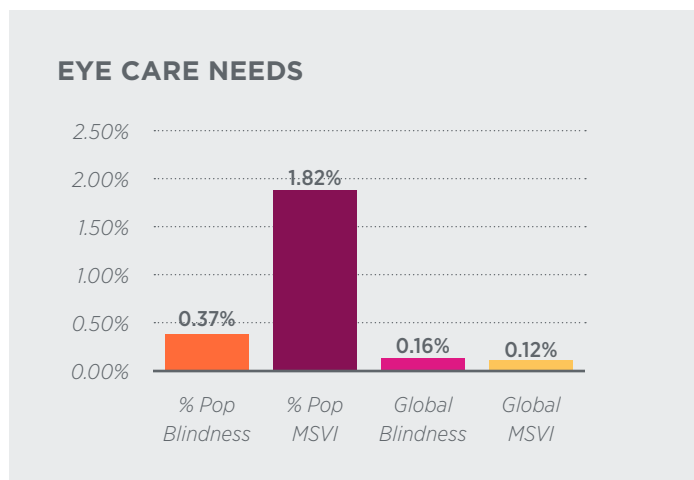


Country Overview

- » Located in Eastern Sub-Saharan Africa
- » Malawi spans 45,747 square miles
- » Population: 19.1 million people
- » 2021-22 Human Development Index Ranking: 169 of 191 countries¹

Scope of Eye Care Needs²

- » 0.37% of Malawi's population is blind (69,000), as compared to 0.19% in the United States
- » 1.82% of the population has moderate to severe vision impairment or MSVI (339,817), as compared to 2.02% in the United States
- » 0.16% of global blindness
- » 0.12% of global MSVI



Nationwide Eye Care Response

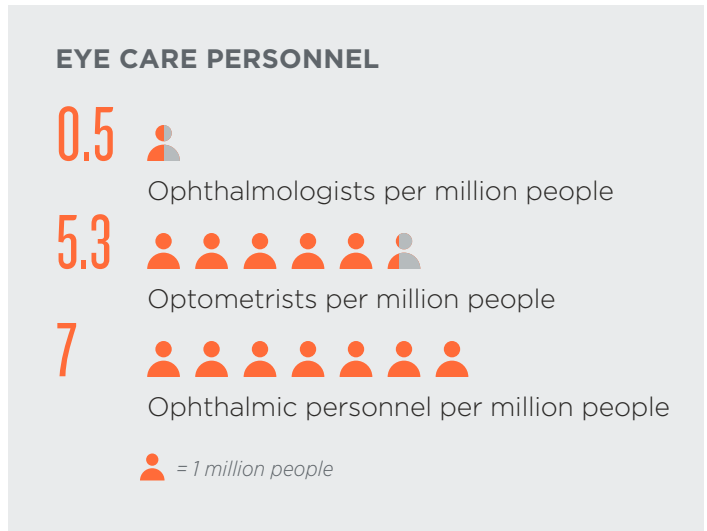
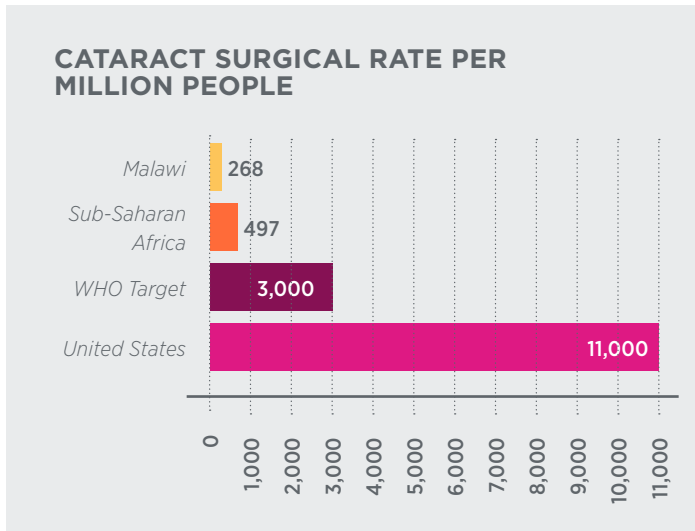
Sub-Saharan Africa's median Cataract Surgical Rate (CSR) is 497 — 28% of the global average and 6% of the average for high-income countries. Seva works to improve these rates through our hospital management systems and training support in Malawi, focusing on improvement in the following Global Action Plan indicators for universal eye health.

- » Malawi's CSR was 268 surgeries per million in 2019, as compared to the US CSR of 11,000
- » 0.5 ophthalmologists per million people in 2019 (14 total)
- » 5.3 optometrists per million people in 2019 (102 total)
- » 7 allied ophthalmic personnel per million people in 2019 (136 total)

¹ 2021-22 UNDP Human Development Report: https://hdr.undp.org/system/files/documents/global-report-document/hdr2021-22pdf_1.pdf

² Unless otherwise noted, all country sight statistics from IAPB Vision Atlas: <http://atlas.iapb.org/global-action-plan/gap-indicators/>

MALAWI FACT SHEET



Seva’s Approach in Malawi

Seva partners with the Kilimanjaro Centre for Community Ophthalmology (KCCO) to reduce childhood blindness in Malawi. Established in 2001 in response to the VISION 2020 initiative, KCCO works to increase access to high-quality eye care services provided by Africans for Africans. With Seva’s support in hospital management systems and training, KCCO partners with local governmental hospitals to train community health workers, conduct outreach trips to rural communities without regular access to eye care, provide clinical training for ophthalmologists and cataract surgeons, and providing funds for medical treatments for those who cannot afford them. In Malawi, there is only one pediatric ophthalmologist for the entire country. Seva and KCCO partner with this doctor and the Queen Elizabeth Central Hospital, Blantyre to expand its pediatric eye care program. This support includes necessary consumables, eye health promotion, training of key informants across communities who can identify eye health problems in children, as well as surgical support. It also contributes toward a coordinator tasked to manage the pediatric outreach efforts.



Resources

- [Seva’s work in Africa](#)
- [KCCO Website](#)

* Numbers based on reports received.

MALAWI FACT SHEET

