

Pakistan Fact Sheet

SEVA'S WORK AT A GLANCE: In country since 2007 | Partner: 1



Country Overview

- » Pakistan spans 307,374 square miles
- » Population: 221 million
- » 2021-22 Human Development Index Ranking: 161 of 191¹

Scope of Eye Care Needs²

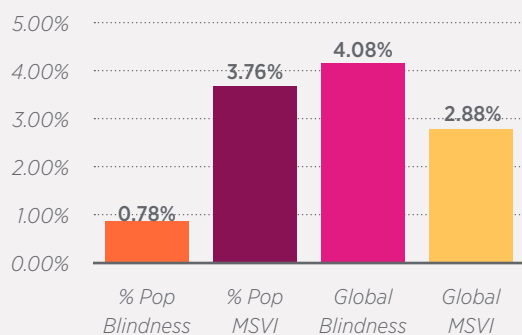
- » 0.78% of Pakistan's population is blind (1,755,867), as compared to 0.19% in the United States
- » 3.76% of the population has moderate to severe vision impairment (8,501,090), as compared to 2.02% in the United States
- » 4.08% of global blindness
- » 2.88% of global MSVI

Nationwide Eye Care Response

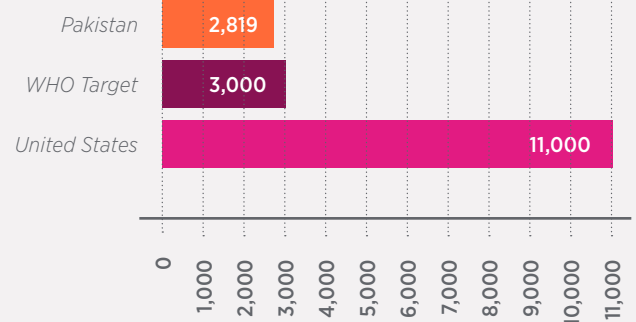
Pakistan's Cataract Surgical Rate (CSR) was 2,819 surgeries per million in 2014, as compared to the US CSR of 11,000.

- » 14.8 ophthalmologists per million people in 2015 (2,800 total)
- » 4.6 optometrists per million people in 2019 (1,020 total)
- » 9 allied ophthalmic personnel per million people in 2015 (1784 total)

EYE CARE NEEDS



CATARACT SURGICAL RATE PER MILLION PEOPLE



¹ 2021-22 UNDP Human Development Report: https://hdr.undp.org/system/files/documents/global-report-document/hdr2021-22pdf_1.pdf

² Unless otherwise noted, all country sight statistics from IAPB Vision Atlas: <http://atlas.iapb.org/global-action-plan/gap-indicators/>

Seva's Approach in Pakistan

Approximately 4% of the world's blind live in Pakistan. With 1.7 million people blind, many have limited access to eye care. Most of Pakistan's trained ophthalmologists work in urban areas at government or private clinics, making accessible and affordable eye care a concern in rural communities. Women living in rural areas are especially vulnerable, as social constraints inhibit their ability to travel to receive necessary services.

Seva strengthens eye care programs in rural Pakistan with our partner, Comprehensive Health & Education Forum (CHEF) International. Seva's work with CHEF International is focused on providing quality and affordable eye care to the farming community of Buner. Together, Seva and CHEF established an eye care center in Buner in 2017 providing accessible, affordable and sustainable eye care services to the community.

Seva supports CHEF International with local staff development, operational improvements, and funding for direct services. With this support, Seva has helped CHEF become a resource to other Pakistani eye hospitals.

Seva and CHEF International plan to focus on the National IPEC plan 2022-25 in existing projects in Buner as well as exploring opportunities in the public private partnership initiative.

Impact of COVID-19 in Pakistan

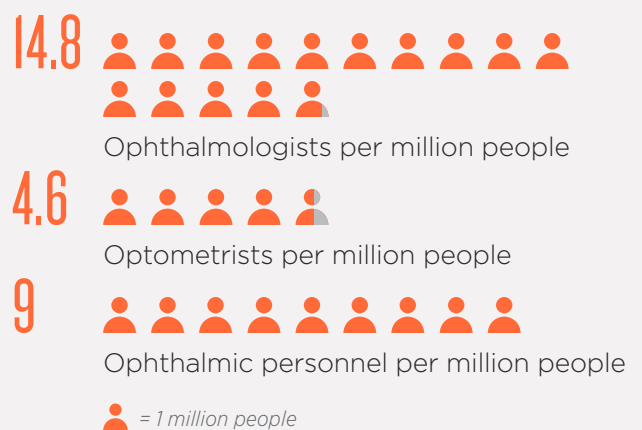
COVID-19 cases continue to increase across the country. The pandemic has created gaps in healthcare delivery and increasing cases in rural areas are adding to the uncertainty. Seva's partner in Pakistan, CHEF, has increased the capacity of its para medical and medical staff with a focus to improve local community awareness of COVID-19 in the three districts where it works. As part of its response, Seva provided funds to procure essential protective equipment for its partner hospitals. CHEF has also provided training on improving safety protocols to its networks of hospitals.

SPOTLIGHT ON INCREASING ACCESS

For two years, Memoona, a 55-year-old resident of Naguman, Peshawar, had developed impaired vision problems. Mother of two daughters and two sons, she had to provide for her children and could not afford the treatment of her eyes. One day, she heard of CHEF International's free eye camp through a neighbor who advised her to attend. Once there, the staff referred her to the eye hospital in Charsadda where doctors diagnosed her with cataract, and surgery would have to be performed to restore her vision. The doctors successfully operated on her free of cost. Memoona was very impressed with the staff of the hospital who guided her in a friendly, caring and genuinely concerned environment.

"I am so grateful to CHEF International for improving my quality of life... My eyesight has been restored!"

EYE CARE PERSONNEL



Resources:

[Seva's Clear Vision for Pakistan](#)
[CHEF International](#)

PAKISTAN FACT SHEET

IMPACT (FY 2021-2022)*

43,339

People receiving services

2,423

Cataract surgeries performed

1,689

Children screened

547

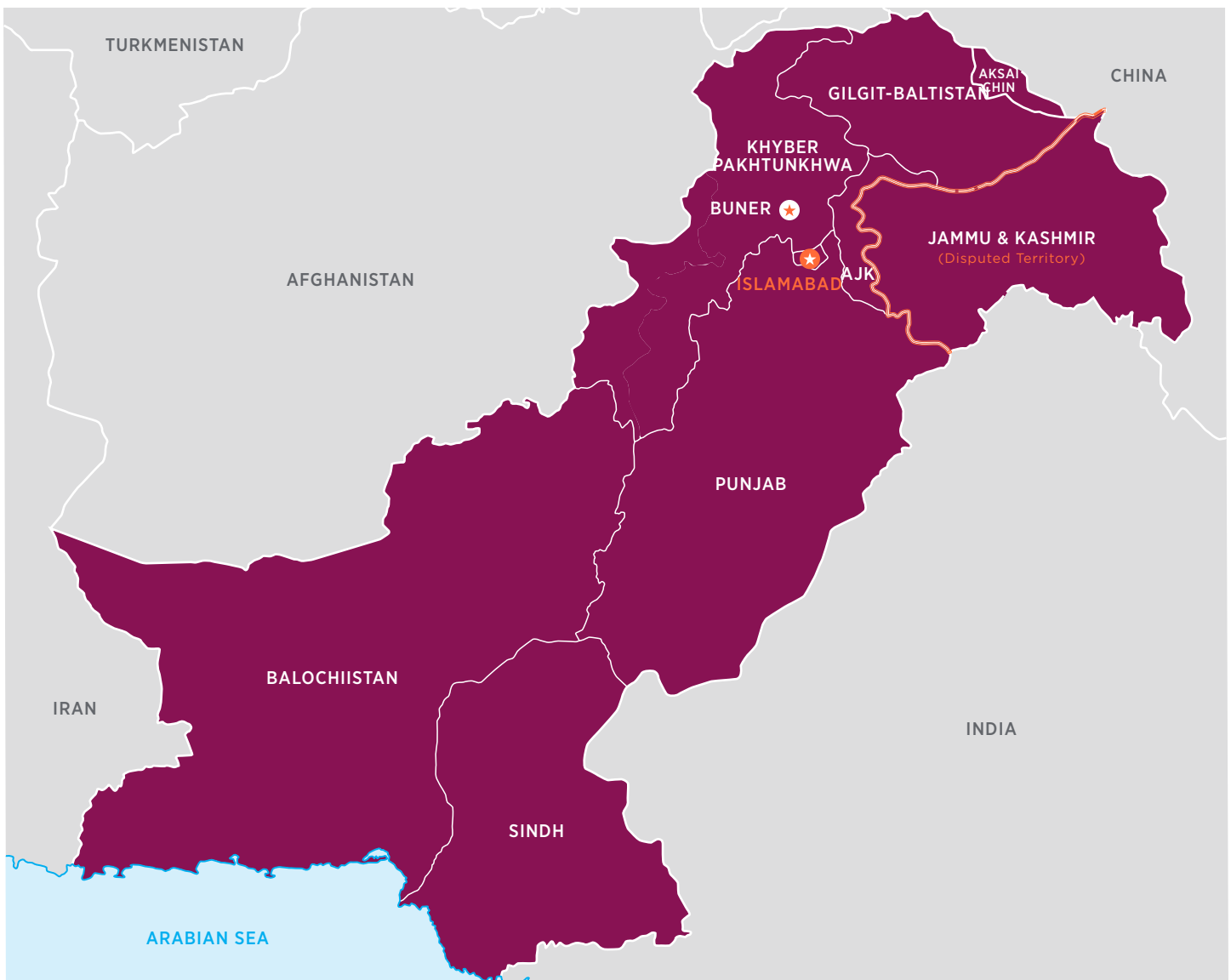
Children receiving glasses

1

New VC funded through Seva

257,000

People who now have access to care



* Numbers based on reports received.